

SUCTION ACCESSORIES



SUCTION ACCESORIES

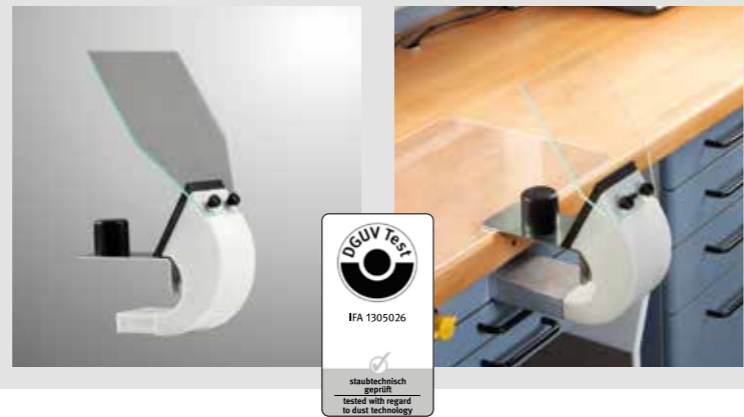


To properly benefit from and utilize a functionally flawless extraction system, it is important that all of the components in the system match perfectly. Thus, we offer an extensive line of accessories that are specially designed for use throughout the dental laboratory industry and fitted to perfectly match the suction systems of Zubler.

R1200 Suction Funnel

The R1200 plug-in suction funnel is suitable for all common rectangular tubes with an inside dimension of 75 x 25 mm. It is extremely quiet and suitable for most work. Removable and mobile, the safety glass is detachable and is held in place with two thumbscrews. Different safety glass sizes are available.

Item No.: 825/241



R1250 Suction Funnel

The R1250 suction funnel is designed for delicate work with a small, articulating safety glass shield for the ceramic / precious metals department. The exchangeable R1260 gold filter easily inserts into the R1250 suction funnel for the capture of gold particles.

Item No.: 825/236



R1251 Suction Funnel

The R1251 suction funnel is similar to the R1250 suction funnel but with an exchangeable safety glass shield attached with two thumbscrews. Different glass sizes are available. The exchangeable R1260 gold filter can also be used with the R1251 to capture gold particles.

Item No.: 825/2360



R1260 Gold Filter

The R1260 uses fine filtration mesh screens for catching gold at the source. Suitable for use with R1250 & 1251 Suction Funnels, this gold filter system slides easily place to capture gold particles.

Item No.: 825/234



SH1 Suction Funnel

The SH1 Mobile Suction Funnel can be used without permanent installation on any desktop. The heavy base plate and non-slip rubberized padding can be used on any position on the table. The large shield protects the eyes from dust and debris or broken blades or tools and ensures suction placement at the point of origin.

Item No.: 802/0035



R1400 Suction Funnel

The R1400 suction funnel is an extend-able suction funnel unit for mounting directly below the table top. When pulling out the suction grille, the suction is engaged mechanically. This system is only suitable for mounting under open tabletops with a thickness of 20 to 40 mm. Port located manual mechanical closures do not correspond with the test conditions of TÜV or BGIA tested Extraction units.

Item No.: 825/224



Safety Glass Panels

Our standard sizes range from 87 x 128mm, 140 x 190 mm, 200 x 2500 mm and are designed for mounting with 2 screws at a distance of 44mm on most of our suction funnels.

87 x 128 mm - Item No.: 557/179

140 x 190 mm - Item No.: 557/172

200 x 250 mm - Item No.: 557/171



R1000 Rectangular Pipe

The R1000 has an inner dimension of 75x25mm and a Length of 415mm that was designed for use with most dental furniture. The special geometry of its inner channel reduces turbulence keeping noise to a minimum. The hose connection is available in diameters of 36mm or 40mm.

Item No.: 570/065



R1300 Extend-able Rectangular Pipe

The R1300 Extend-able rectangular pipe features an inner-diameter of 75 x 25 mm, length of 426 mm and is suitable for many common dental benches. The rectangular pipe can be extended to 110 mm to allow work in front of the bench. The hose connection is available in diameters of: 36 mm or 40 mm.

Item No.: 825/228



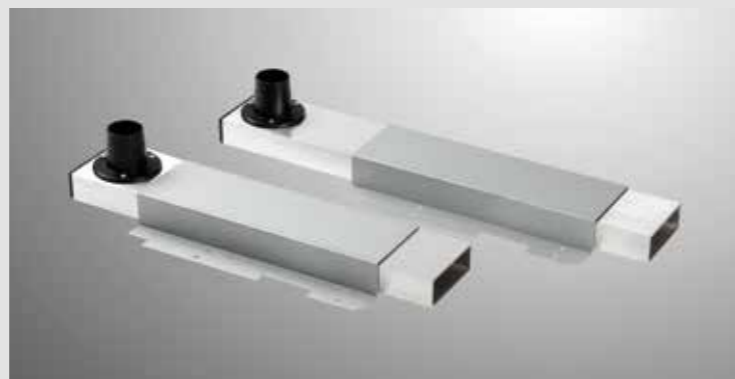
Rectangular Tubes in Lengths

Should the R1000 or R1300 rectangular pipes not fit your bench or your needs, we do offer custom tube lengths, available starting with quantities as low as a single piece

R1000S - Item No.: 570/0657

R1300S - Item No.: 825/2285

Please always specify the desired length in mm from front to middle.



R1100 Rectangular Silencer

The R1100 rectangular tube silencer fits all standard rectangular tubes with an inside dimension of 75mm x 25mm and a minimum length of 415mm. Reduces suction noise immediately after the suction funnel, to achieve the highest possible noise reduction.

Item No.: 825/2615



R1101 Round Silencer

The R1101 Round Silencer is suitable for suction tubes with an inside diameter of 36mm and 40mm. The circular silencer is incorporated directly into the tube path to significantly reduce the exhaust noise.

Item No.: 825/282



R1500 Exhaust Hood

Investing and divesting produce extremely hazardous dust. The R1500 adjustable exhaust hood can be mounted on the table or wall (Wall mount available) and positioned for optimal extraction using the adjustable arm

Item No.: 825/273

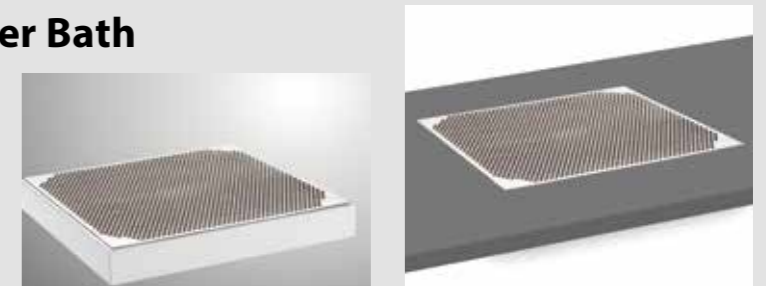
Item No.: 570/2301 (Wall Bracket)



R1600 Stationary Monomer Bath

When installed in a tabletop, the Monomer Bath R1600 creates a comfortable, stationary working environment for mixing plastics.

Item No.: 825/230



R1601 Mobile Monomer Bath

similar to the R1600 but movable from station to station with R1000 or R1300 rectangular suction ports. Simply remove the existing Suction Funnel and install the R1601 Mobile Monomer Bath.

Item No.: 825/229



S1 Pre-Separator

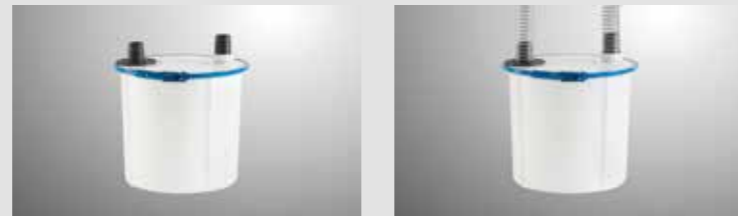
Dust sent into the pipes of a suction system has a destructive effect. The wall thickness of pipe can diminish over time, especially at reducers and arcs producing a hole that can leak hazardous materials into the laboratory environment. Dust should be caught directly at the source before it enters the pipes. The S1 Pre-Separator is designed to handle the dust of up to three stations and uses a bucket for easy dust removal.



Item No.: 825/267

Pre-Separator SM (Small)

Designed specifically for divesting. Using the same principle as the S1 Pre-Separator. Utilized for a smaller space.



Item No.: 825/2671

FP-D/FP1000 Suction Port Openers

The FP-D Suction Port Opener features no lag time for lab equipment and an integrated socket for direct connection. The FP1000 Suction Port Opener with lag time is for equipment that does not have an integrated socket for direct connection. The electronics are not suitable for hand-piece workstations.



FP-D

FP1000

FP-D - Item No.: 825/2571

FP1000 - Item No.: 825/257

CAD/CAM Suction Port Openers for Milling Machines

The AP-R is designed as a suction point opener for all standard CAM milling machines with a switching output of 24V or 230V. Furthermore, it functions to transmit data signals to FZ VARIO extraction systems for milling operations outside of normal operating hours. Please always specify the type of CAM milling machine when ordering, so that we can supply you with the appropriate connection cable.



Item No.: 825/256Q

AP500/AP501 Suction Port Opener

The AP500 is the suction port opener for all common technical equipment. The sensitivity can be calibrated automatically or manually. The AP500 can therefore be used for all laboratory equipment up to 1000 Watts, and is one of the most flexible and highest quality controllers for porting suction in the work place.

AP500 - Item No.: 825/256 (for FZ VARIO)

AP501 - Item No.: 822/050 (for FZ1/FZ2)



F520/F540 Bench Insertion

The F520/F540 Bench Insertions were designed specifically for Freuding's F20 and F40 line of furniture. In addition to the electronic suction port opener, the bays contain an expandable suction duct with integrated silencer. Suited for Zubler R1200 and R1250 suction funnels



F520 - Item No.: 825/291F20

F540 - Item No.: 825/291F40

K500/K3001 Bench Insertion

When the Zubler module is inserted into the existing suction drawer support frame of the KaVo "Ergospace" line of benches, the existing suction funnel can still be used.



K500 - Item No.: 825/296 (for FZ VARIO)

K3001 - Item No.: 825/2961

(for all other extraction systems)

K510/K520 Bench Insertion

Suited for "SpaceMaster" and "FlexSpace", custom solutions are also available. The Zubler keypad is incorporated into the original KaVo panel (shown right)



K510 - Item No.: 825/238

K520 - Item No.: 825/225

ST02 Suction Outlet

ST02 Suction Outlets can be mounted in the laboratory for use with external accessories. Cleaning accessories can be utilized in conjunction with the suction system to comprehensively clean floors and work spaces quickly and conveniently throughout the laboratory.



Item No.: 825/2750

ST03 Suction Outlet

Similar to the ST02, the ST03 adds the convenience of a reed sensor that start the suction when the port is enabled. This configuration is required if a constant vacuum is not supplied to the port by a central suction system. e.g. For single suction systems with data interface and multi-suction systems.



Item No.: 825/2752

RS-1 Cleaning Set

Designed for cleaning small work-spaces and equipment, the RS-1 consists of a 1.8 meter suction hose, a workplace brush and a crevice tool.



Item No.: 825/490

RS-2 Cleaning Set

Designed for cleaning floors, work-spaces and equipment, the RS-2 consists of a 5 meter hose, a floor nozzle, a workplace-brush and a crevice tool.



Item No.: 825/497

R1700 Spraybox

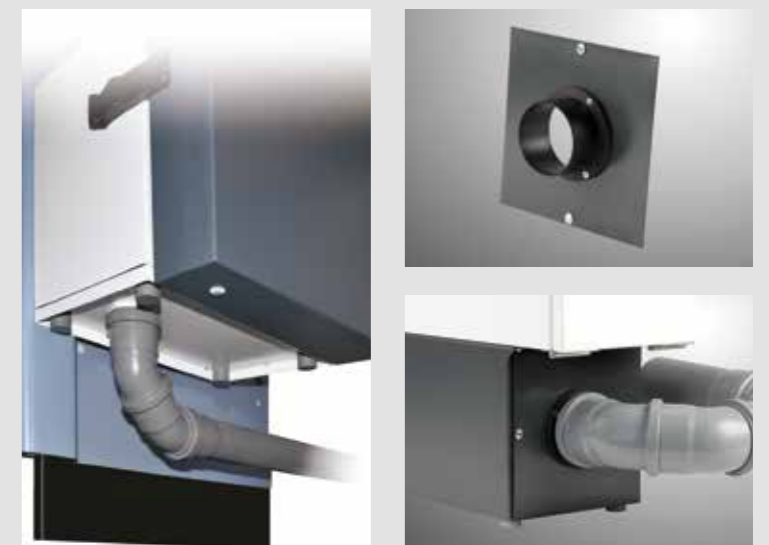
The R1700 spray box was designed to draw away the fumes from scan sprays prior to scanning. Thanks to its unique design, the box allows the user to achieve optimal angle and movement. Combined with an efficient suction line, the hose is available in 36mm or 40mm diameters.



Item No.: 825/223

External Exhaust Fitting

Upon request, an exhaust fitting can be supplied for all individual extraction systems by utilizing these special adapters. These fittings direct the exhaust airflow into the open air (outside of the building) even with individual workstations, thus ensuring a better indoor climate and less odor in the laboratory. This is especially advisable in the case of workstations where an activated carbon filter is used. Piping sold separately.



Item No.: 570/2679 (for V4000-Series)

Item No.: 570/2910 (for V6000/V7000-Series)

SUCTION AND COMPRESSED AIR HOSES



Suction Hose

Internal diameter 36mm



Item No.: 530/001

Compressed Air Hose

Outer Diameter 8mm



Item No.: 530/301

Suction Hose

Inner Diameter 40mm



Item No.: 530/004

Compressed Air Hose

Outer Diameter 6mm



Item No.: 530/302

Suction Hose

Inner Diameter 50mm



Item No.: 530/0067

Adapters

To connect your device to our suction hoses



FILTER BAGS



We realize our suction systems are utilized for a variety of applications, thus we offer an extensive range of different filter bags made of different materials specifically suited to work with our units across a variety of applications and simultaneously help keep the working environment safe.

Filter bag

Suitable for:
V4010 / V4011
suctions systems



Item No.: 556/0035
(3 Per Pack)

Filter bag (wide/white)

Suitable for:
V4050/V4051/V4250/V4251
suction systems



Item No.: 556/0063
(1 ea)
Item No.: 556/0063P
(3 Pack)

Filter bag (wide/white)

Suitable for:
V6000/V7000 suction
systems



Item No.: 556/035C
(1 ea)
Item No.: 556/035CP
(3 Pack)



FILTER CARTRIDGES



Designed to operate with Zubler extraction systems, we offer ultra fine filter cartridges of different materials, suitable for various applications.

Fine Filter Cartridge

10 square meters of filter area

Suitable for:
FZ10 / FZ20 / FZ30 / EF10
Suction Systems

Item No.: 556/052



Fine Filter Cartridge

5 square meters of filter area

Suitable for:
FZ5 / FZ5/2 / EF5 Suction
Systems

Item No.: 556/062



Fine Filter Cartridge

Suitable for:
FZ2 VARIOmatic Suction
systems.

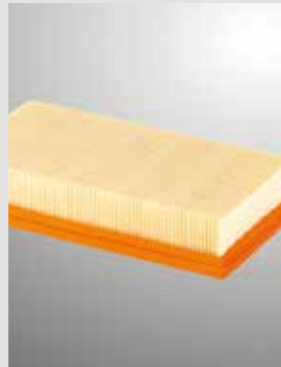
Item No.: 556/034



Safety Filters

Suitable for:
FZ2 VARIOmatic Suction
systems.

Item No.: 556/071



Fine Filter Cartridge

Suitable for:

FZ1 VARIOmaster suction
systems

Item No.: 556/038



Safety Filter

Suitable for:

FZ1 VARIOmaster suction
systems

Item No.: 556/039



Activated Carbon Filter

Suitable for:

V4010/V4011/V4050/V4051
V4250/V4251/ V5000 Suction
systems

Item No.: 556/0041



Fine Filter Cartridge

Suitable for:

V4000-Series/V5000/V6000/
V7000 Suction Systems

Item No.: 556/019



Activated Carbon Filter

Suitable for:

V6000/V7000 Suctions
systems.

Adding the Activated carbon
filter completes the three way
filter-system in these units.

Item No.: 556/0046



Activated Carbon Refill Pack

Item No.: 556/0042



AV1000 Preparation Box

Both quality and quantity are a prerequisite for an economically working laboratory. It starts usually in production scheduling. Here the foundation is laid for high-quality work. Therefore, special emphasis was placed on ergonomics, cleanliness and efficiency in developing the preparation box by Zubler. Through an integrated blow-off nozzle which is actuated by a foot switch, plaster models can be air-blown in the box. The protective glass and work block can be swung upwards. By removing the funnel, the drip pan can be removed and washed easily.

- AV1000** - Item No.: 825/310
- FG1000 (Pedestal)**- Item No.: 825/324
- Mounting Plate for pedestal** - Item No.: 825/323

Technical Data:

AV1000

| | |
|---------------------------------------|-------------------|
| Dimensions: (width x height x depth): | 630 x 430x 580 mm |
| Weight: | 26 kg / 57.3 lbs |
| Required compressed air connection | 3 bar |

Lighting

The preparation box comes equipped with a 36W delux energy saving tube. It offers a daylight-like illumination.

Storage for work and rotary



Air Nozzle



Suction Funnel



Universal

Suitable for all common hand pieces

Easy to Clean

Protective glass and work block can be pivoted upward and away. After removing the funnel, the drip pan can be removed and washed easily.

Pedestal

With mounting plate for handpiece



MB1000 Monomerbox

In the same design as the work preparation Box AV 1000, the company offers the Zubler Monomer Box that is suitable for exhausting toxic fumes that arise while mixing plastic monomer. The vapors in the box are pulled downward, and will be suctioned through the grid-like pad directly into the suction system. Please note that an extraction system with activated carbon filter or a central suction system should be used to exhaust air outside of the building or facility.

MB1000 - Item No.: 825/315

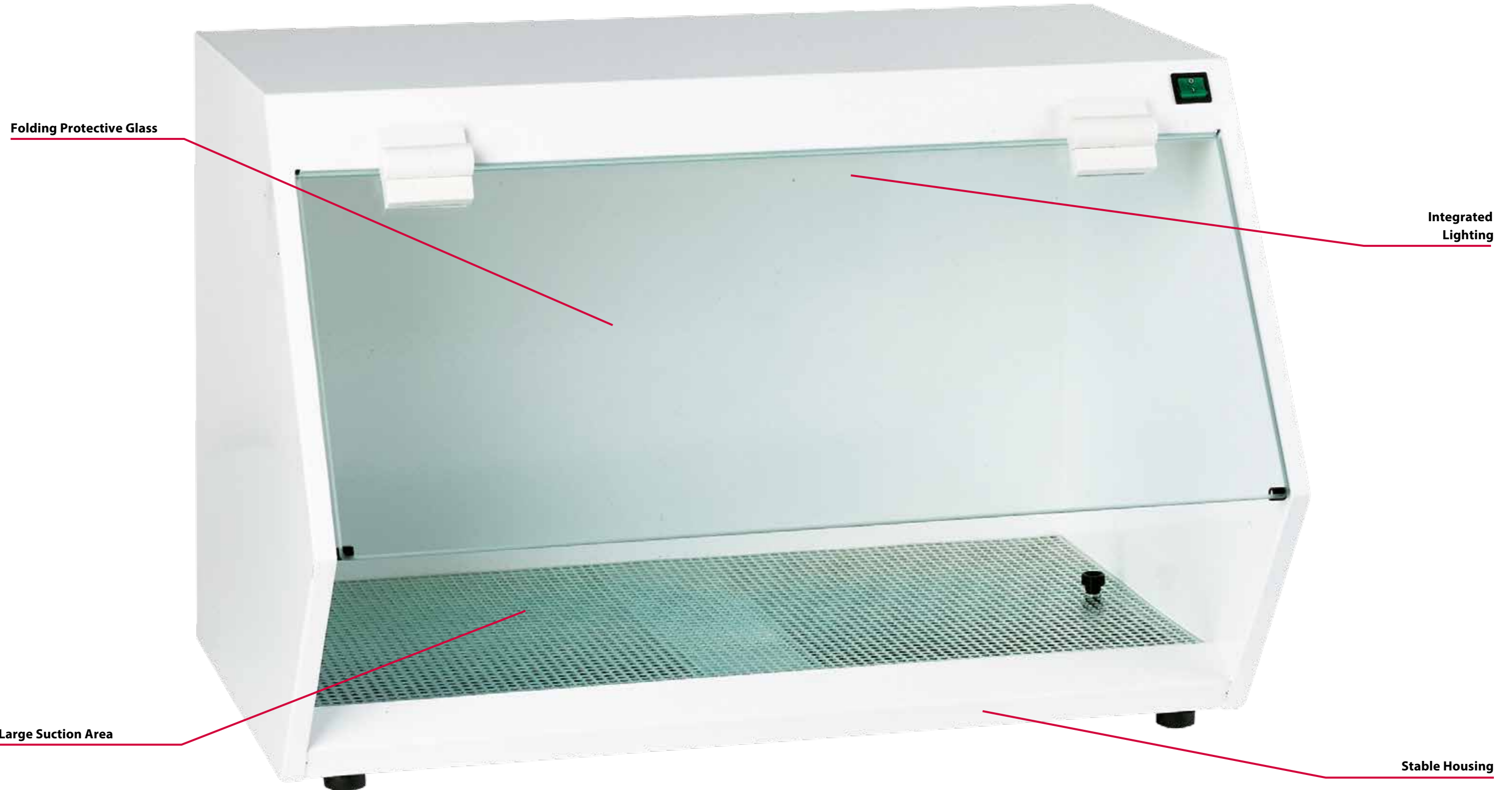
FG1000 (Pedestal) - Item No.: 825/324

Technical Data:

MB1000

Dimensions: (width x height x depth): 630 x 460x 420 mm

Weight: 18 kg / 39.7 lbs



VARIOstar K50

knee control unit



VARIOstar D50

Tabletop control unit



The new knee device included with with Zubler's VARIOstar K50 combines the main control panel and knee pedal into a single assembly. Perfect for everyday laboratory work, this configuration saves counter space and floor space.



Rotation speed indicator
Easy to read and continuous.

Speed control

Safety Switch
Unlock the maximum rotational speed

Minus-Taste/Linkslauf
Button to reduce the maximum rotation speed (operational safety)
Left and Right-Hand rotation up to maximum 50,000 rpm..

Plus-Taste/Rechtslauf
Taste zur Erhöhung der maximalen Drehzahl



Easy Speed Adjustment
40mm of movement

System-Variants:

- 804 - 3112 VARIOstar K50 Knee control unit 220 V - 240 V
- 804 - 3111 VARIOstar K50 Knee control unit 115 V

Contains:
804 - 3012 Knee control unit 220 V - 240 V 804 - 3002 Handpiece with chuck Ø 2,35 mm
804 - 3011 Knee control unit 115 V



- 804 - 3122 VARIOstar D50 Tabletop unit with Foot pedal 220 V - 240 V
- 804 - 3121 VARIOstar D50 Tabletop unit with Foot pedal 115 V

Contains:
804 - 3022 Tabletop control unit 220 V - 240 V 804 - 3002 Handpiece with chuck Ø 2,35 mm
804 - 3021 Tabletop control unit 115 V 804 - 1016 Foot pedal



- 804 - 3132 VARIOstar D50 Tabletop unit with Foot control lever left/right 220 V - 240 V
- 804 - 3131 VARIOstar D50 Tabletop unit with Foot control lever left/right 115 V

Contains:
804 - 3022 Tabletop control unit 220 V - 240 V 804 - 3002 Handpiece with chuck Ø 2,35 mm
804 - 3021 Tabletop control unit 115 V 804 - 1015 Foot control lever



- 804 - 3142 VARIOstar D50 Tabletop unit with Knee pedal 220 V - 240 V
- 804 - 3141 VARIOstar D50 Tabletop unit with Knee pedal 115 V

Contains:
804 - 3022 Tabletop control unit 220 V - 240 V 804 - 3002 Handpiece with chuck Ø 2,35 mm
804 - 3021 Tabletop control unit 115 V 804 - 1017 Knee Pedal (left/right mountable)



Z 20
VARIO

 **zubler**

 **zubler**[®]
dental & technik

Zubler Gerätebau GmbH
Buchbrunnenweg 26
D - 89081 Ulm-Jungingen

Tel.: + 49 (0) 731 - 14 52 0
Fax: + 49 (0) 731 - 14 52 13
www.zubler-group.de

B00229 / 02-2017



Distributed By:

 **zubler** USA

Zubler USA L.L.C.
805 Marathon Pkwy. Ste 130
Lawrenceville, GA 30046

Contact Us:
Georgia (770) 921-2131
Texas (972) 600-9187

Website: www.zublerusa.com
Email: sales@zublerusa.com