

# TABEO-1/M/ZIRKON-100



## 20 SINGLE CROWNS

- ▼ High-quality molybdenum-disilicide heating elements
- ▼ Maximum temperature 1650°C
- ▼ Program control
  - 7-segment LED
  - 4 steps
  - 9 program numbers
  - Special functions
- ▼ Service programs
  - A - Temperature control\*
  - C - Purge heating chamber
  - E - Regenerate heating elements
- ▼ Thermocouple PtRh-Pt, type S
- ▼ Maximum heating rate 25 °C/min
- ▼ Temperature accuracy at 1500°C +/- 3 °C
- ▼ Timer function

\* only in conjunction with test-kit



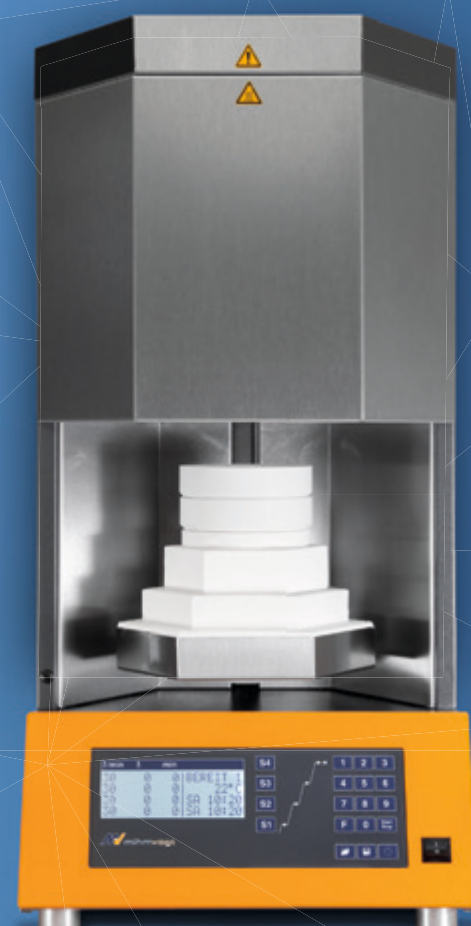
# HTS-2/M/ZIRKON-120



## 60 SINGLE CROWNS or SINTERING DISC

- ▼ High-quality molybdenum-disilicide heating elements PRO
- ▼ Maximum temperature 1650°C
- ▼ Heating-chamber capacity 2x Ø 120/30 mm
- ▼ Program control
  - LCD-Display
  - 4 steps
  - 30 program numbers
  - Special functions
- ▼ Service programs
  - A - Temperature control\*
  - C - Purge heating chamber
  - E - Regenerate heating elements
- ▼ Thermocouple PtRh-Pt, type S
- ▼ Temperature accuracy at 1500°C +/- 3 °C
- ▼ Timer function

\* only in conjunction with test-kit



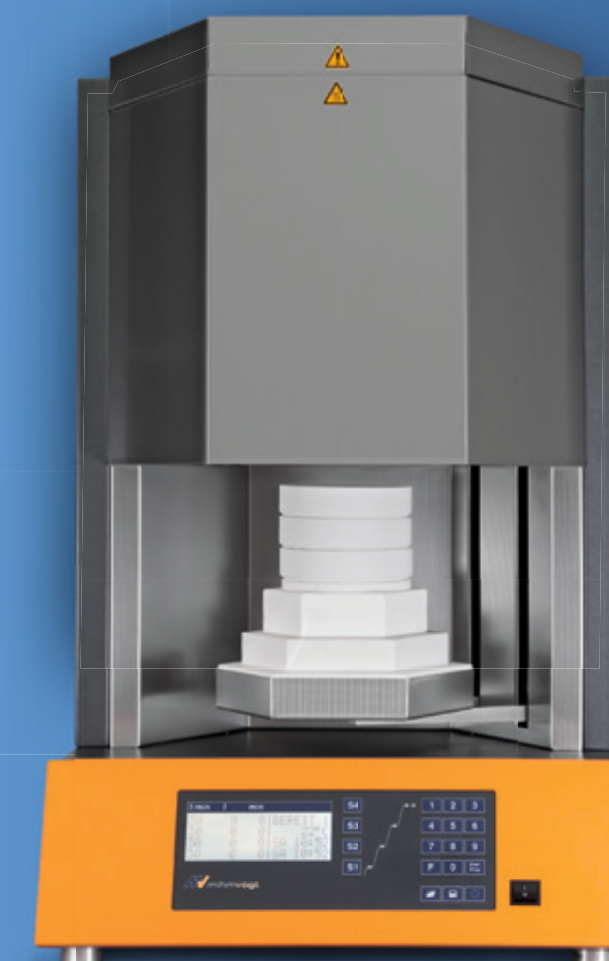
# HT-2/M/ZIRKON-120



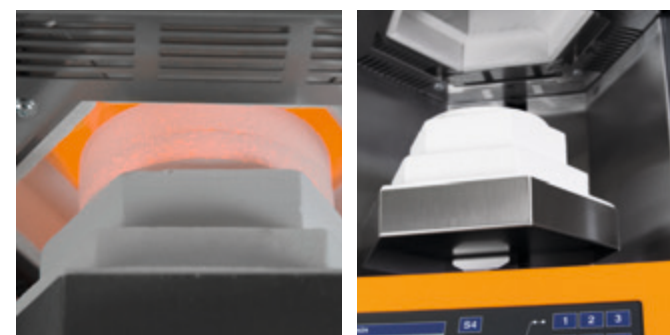
## 90 SINGLE CROWNS or SINTERING DISC

- ▼ High-quality molybdenum-disilicide heating elements PRO
- ▼ Maximum temperature 1650°C
- ▼ Heating-chamber capacity 3x Ø 120/30 mm
- ▼ Program control
  - LCD-Display
  - 4 steps
  - 30 program numbers
- ▼ Service programs
  - A - Temperature control\*
  - C - Purge heating chamber
  - E - Regenerate heating elements
- ▼ Thermocouple PtRh-Pt, type S
- ▼ Temperature accuracy at 1500°C +/- 3 °C
- ▼ Timer function

\* only in conjunction with test-kit



Technical data	TABEO-1/M/ZIRKON-100
Power max.	1500 W
Voltage range; frequency	220–240 V; 50/60 Hz
Weight	55 kg
Dimensions W/D/H	400/400/600 mm



Technical data	HTS-2/M/ZIRKON-120
Power max.	3200 W
Voltage range; frequency	200–240 V; 50/60 Hz
Weight	60 kg
Dimensions W/D/H	390/500/790 mm















Technical data	HT-2/M/ZIRKON-120
Power max.	3800 W
Voltage range; frequency	200–240 V; 50/60 Hz
Weight	74 kg
Dimensions W/D/H	500/560/820 mm



# Technical data



Details  standard  not compatible

Technical information		TABEO-1/M/ZIRKON-100 9270	HTS-2/M/ZIRKON-120 9550	HT-2/M/ZIRKON-120 9650
Heating-chamber height	mm	42	72	102
Max. heating-chamber capacity	number of trays			
<b>Heating system</b>				
Scope				
Max. temperature				
Heating elements	type			
	number	4	4	6
<b>Process times CLASSIC [1*]</b>				
Max. programmable heating rate	°C/min	25	30	30
Shortest heating period to 1.500°C at 230V	min	61	55	49
Shortest cooling period to 300°C	min	148	47	67
Process duration (incl. holding time 30 min)	min(h)	239(4)	132(2,2)	146(2,4)
<b>Process times SPEED [1*]</b>				
Max. programmable heating rate	°C/min	<input checked="" type="checkbox"/>	99	99
Shortest heating period to 1.500°C at 230V	min	<input checked="" type="checkbox"/>	25	27
Shortest cooling period to 750°C	min	<input checked="" type="checkbox"/>	18	19
Process duration (incl. holding time 30 min)	min(h)	<input checked="" type="checkbox"/>	73(1,2)	76(1,3)
<b>Program control</b>				
7-segment LED		<input checked="" type="checkbox"/>	<input checked="" type="checkbox"/>	<input checked="" type="checkbox"/>
4-lines LCD		<input checked="" type="checkbox"/>	<input checked="" type="checkbox"/>	<input checked="" type="checkbox"/>
Number of process steps		4	4	4
Program numbers		9	30	30
	Number of free programs	9	30	30
<b>Special programs</b>				
Drying		<input checked="" type="checkbox"/>	<input checked="" type="checkbox"/>	<input checked="" type="checkbox"/>
Heating-up ventilated		<input checked="" type="checkbox"/>	<input checked="" type="checkbox"/>	<input checked="" type="checkbox"/>
<b>Service programs</b>				
A-Temperature control [2*]		<input checked="" type="checkbox"/>	<input checked="" type="checkbox"/>	<input checked="" type="checkbox"/>
C-Purge heating chamber		<input checked="" type="checkbox"/>	<input checked="" type="checkbox"/>	<input checked="" type="checkbox"/>
E-Regenerate heating elements		<input checked="" type="checkbox"/>	<input checked="" type="checkbox"/>	<input checked="" type="checkbox"/>
<b>Thermocouple</b>				
PTRh-Pt, type S		<input checked="" type="checkbox"/>	<input checked="" type="checkbox"/>	<input checked="" type="checkbox"/>
<b>Special functions</b>				
RS 232 interface		<input checked="" type="checkbox"/>	<input checked="" type="checkbox"/>	<input checked="" type="checkbox"/>
Door lift		<input checked="" type="checkbox"/>	<input checked="" type="checkbox"/>	<input checked="" type="checkbox"/>
Timer function		<input checked="" type="checkbox"/>	<input checked="" type="checkbox"/>	<input checked="" type="checkbox"/>
<b>Technical data</b>				
Power max.	W	1500	3200	3800
Voltage range; frequency	V; Hz	220-240; 50/60	200-240; 50/60	200-240; 50/60
Weight	kg	55	60	74
Dimensions W/D/H	mm	400/400/600	390/500/790	500/560/820

[1\*] Process values: Sintering temperature = 1500°C; holding time = 30min; 1 x sintering tray [2\*] only in conjunction with test-kit

# Scope of delivery

## 9270 TABEO-1/M/ZIRKON-100

Order No.	Article	PU
96023	ERS Sintering beads YTZ, 2.0mm; 200g	1
7100001	ERS Sintering tray, 100/30mm	1
95025	ERS Sintering tray lid, 100/4mm	1
92056	ERS Removal fork T-1	1
96042	ERS Power cord USA, C19; 16A	1

## 9550 HTS-2/M/ZIRKON-120

Order No.	Article	PU
95023	ERS Sintering granulate YTZ; 200g	1
7100006	ERS Sintering tray SPEED, 120/30mm; slotted	2
7400061	ERS Stacking disc, 120/15mm; for sintering tray	1
96088	ERS Crucible tongs, 100-120mm	1
96042	ERS Power cord USA, C19; 16A	1

## 9650 HT-2/M/ZIRKON-120

Order No.	Article	PU
95023	ERS Sintering granulate YTZ; 200g	1
7100006	ERS Sintering tray SPEED, 120/30mm; slotted	2
7400061	ERS Stacking disc, 120/15mm; for sintering tray	1
96088	ERS Crucible tongs, 100-120mm	1
96042	ERS Power cord USA, C19; 16A	1



**DURABLE.  
RELIABLE.  
ACCURATE.**

**DENTAL** MIHM-VOGT GmbH & Co. KG  
Friedrich-List-Straße 8  
76297 Stutensee-Blankenloch  
Germany

Web www.mihm-vogt.de  
Mail info@mihm-vogt.de  
Phone +49 7244 70871-0  
Fax +49 7244 70871-20

Status: January 2018  
This document was made with maximum care.  
Errors and omissions excepted.  
Pictures and figures related.

# MODEL OVERVIEW

Valid from 01.01.2018



MADE IN GERMANY

