

DENTAL CERAMIC

Paste paints



concept *Art*



conceptArt



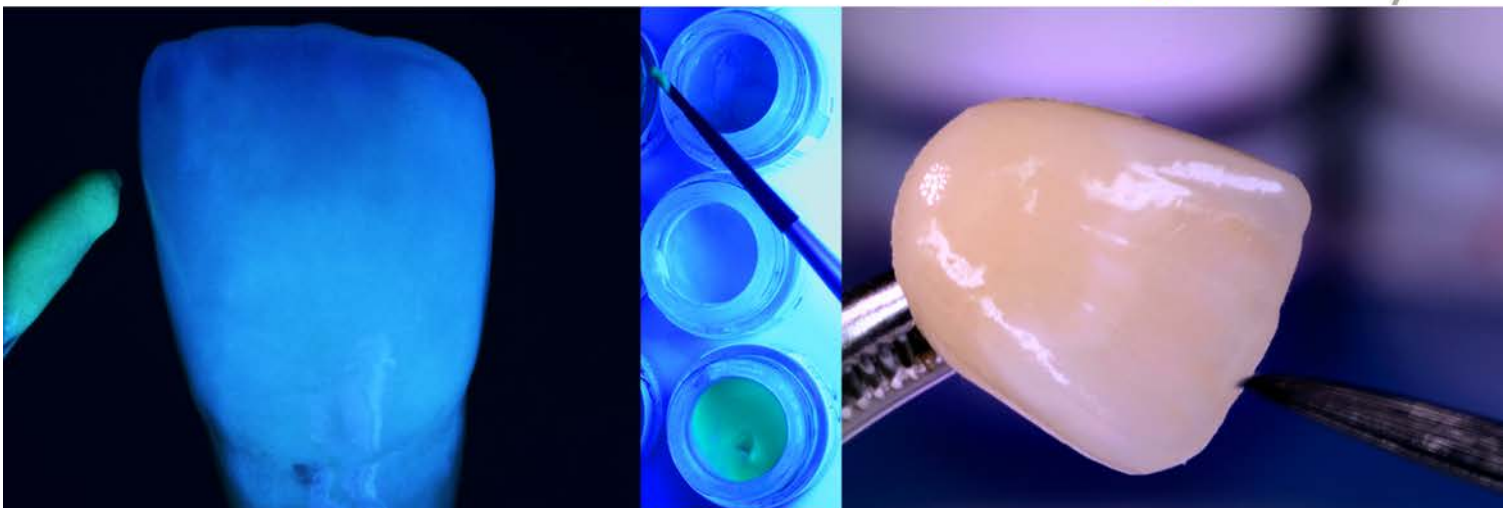
Paste paints for zirconium oxide and lithium disilicate!

The paint concept that meets the demands for maximum aesthetics and efficiency for the dental laboratory.

Fluorescent for natural aesthetics:

- **The natural fluorescence of the conceptArt paste paints makes a major contribution to success in painting technology, since they also perfectly imitate the chromatic and brilliant characteristics of naturally fluorescent tooth substance even in dark regions of the mouth. Fluorescent paints have a big advantage over classic paints:**
- **They have a light-amplifying effect, which means that the optical appearance of the conceptArt paints remains similar to the fluorescence of a natural tooth in relatively dark areas, for example in the buccal cavity. Greying of the painted parts of the ceramic restoration does not take place here.**
- **Simple handling using color pastes of different consistencies. The consistency of the conceptArt paints are matched to the respective area of application. This means that painting with the shades provides for a homogeneous appearance after firing due to their lower viscosity, even when painting larger areas. The more solid consistency of the modifiers, on the other hand, makes the specific fine characterisation of ceramic work easier for the dental technician.**

 ceramay®



Logically structured color system for very simple and reliable coloring.

versatile in use:

For pressed/milled lithium disilicate restorations, whether layered or monolithic for zirconium restorations, layered or monolithic.

Well thought-out and logically structured: the concept of the conceptArt paint system. Colors from the chroma (shades), value and modifier areas are matched perfectly to ceramic restorations. They make it possible for the dental technician to achieve the simplest characterisation and reliable colouring in every area of the tooth, from cervical to incisal.

Concept Art stains are perfect for those small final touches!

15 paints from the chroma, modifier and value areas offer every option for the individualisation and characterisation of the full-ceramic restoration. Both blended and monolithic works can be given maximum aesthetics simply and quickly. Also ideal for monolithic zirconium dioxide works.

INTENSIFIERS

Shade stains

For the occlusal, central and cervical area.

- Shade A
- Shade B
- Shade C
- Shade D

VALUE ENHANCERS

Value stains

For the central and incisal area.

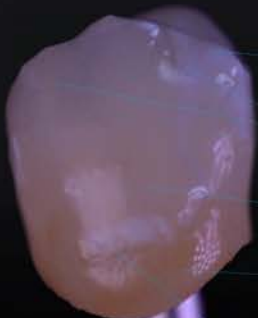
- White, Vanilla, Smoke, Violet, GreyBlue, Green, Black

CHARACTERISATION

Modifier stains

For an individual characterisation in every area of the restoration.

- Yellow, Orange, Khaki, DarkBrown



- White
- GreyBlue
- Shade A
- Shade D

- White
- Dark Brown

