



MEDIT

The easy entry into
digital dentistry

Medit *i500*



MEDIT

 **zubler** USA





Introduction

Our latest product, the Medit i500 intraoral scanner, exemplifies three qualities:

Value, Efficiency, and Productivity

Together, these three qualities make it easy to incorporate our scanner into your workflow. Designed with quality in mind, we created the Medit i500 to add value to your practice.

With its impressive speed and powderless system, the i500 allows for a smoother scanning experience, shortening turnaround times and increasing the productivity of your clinic.

Regardless of your specialization, the i500 has diverse applications, ensuring that your professional needs are met. Increase your work efficiency with the vast flexibility that the open CAD/CAM system offers and never worry about compatibility issues again.

Make the transition today and enjoy the Medit experience.



reddot award 2019
winner

Medit i500



High ROI

We created the Medit i500 scanner with a high Return On Investment in mind. The design and software allow for an unparalleled performance at a very competitive price.



Flexibility

The Medit i500 uses an open CAD/CAM system, allowing you to export STL files out of Medit Link and share it with your preferred lab, or to easily transfer files and track your progress throughout the entire workflow.



Impressive speed

Using two high-speed cameras, the Medit i500 scans quickly and efficiently. With its intelligent scan detecting algorithm, the i500 picks up where it left off for a smooth scanning experience.



Powderless

The Medit i500 does not require the use of powder for regular cases, making the scanning process more seamless and the experience more pleasant for the patient.



Small tip

The small tip on the Medit i500 is beneficial to both the user and the patient through simpler maneuverability and improved patient comfort.



High resolution

The Medit i500 produces realistic images which are high in resolution and rich in detail, allowing you to distinguish between tooth structure and soft tissue for easy identification of margin lines and undercuts.



Accuracy

	In vitro*		In vivo**
	Trueness	Precision	
Single	5.3µm ± 0.34	3.2µm ± 0.49	10µm
Quadrant	17.3µm ± 0.43	6.3µm ± 0.63	25µm
Full arch	21.0µm ± 1.48	22.6µm ± 7.55	50µm

* Accuracy test in vitro was conducted by Yonsei University College of Dentistry according to the methods in "Accuracy comparison analysis on scan data of single tooth, quadrant, and full arch between two types of intraoral scanner, i500 and Trios 3" Ji-Man Park, 19 December 2018.

** Accuracy test in vivo was conducted by Medit.



Video type

There is no need to worry about choppy results with the Medit i500 as it takes rapid video-based scans, capturing more data in a short period of time. The resulting image taken by the dual cameras is hence smoother and more detailed.



Lightweight

Scanning can be uncomfortable and tiring, especially if you're using a heavy scanner. But we have eliminated that problem with the Medit i500 scanner which is light in weight and easy to hold, making the process a comfortable one for you.



Vivid color

The Medit i500 scanner produces precise-colored scans which can distinguish between soft tissue, plaque and teeth.



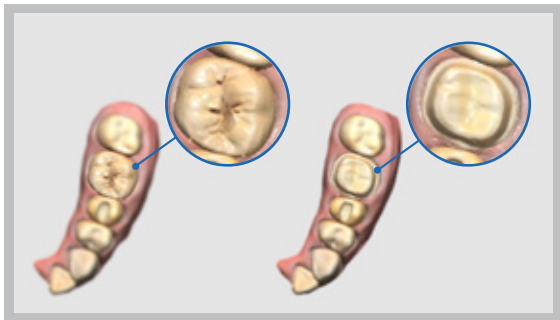
Single button control

The single button of the Medit i500 allows the user to start and stop the scan at any moment without having to reach for the computer. Press the button down once to start scanning, and another time to stop. When the scan is complete, hold it down to move to the next scanning stage.



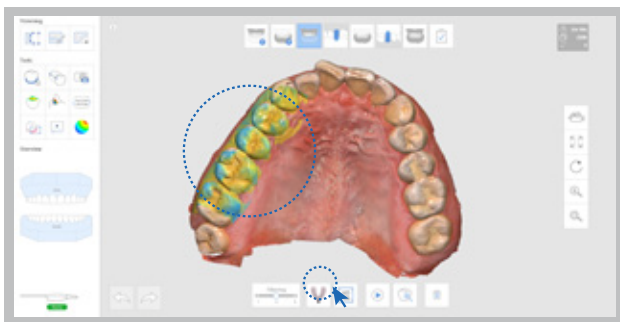
Medit i500

Using the Medit i500 and its accompanying software is a pleasant experience. It is easy to understand for all users, and it is simple to incorporate the system into your practice or lab.



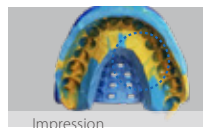
Pre-Operation Scan

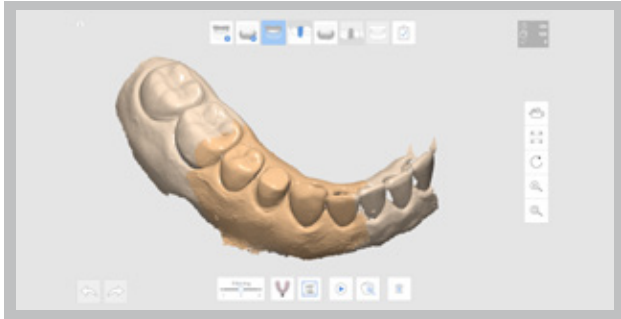
You can perform a pre-operation scan of a patient's teeth and utilize this data for a variety of uses. With this pre-operation scan data, the post-operation scan can be performed more quickly and easily. The data can also be used as reference data in the modeling process to assist you in creating more natural prosthesis.



Impression Scan

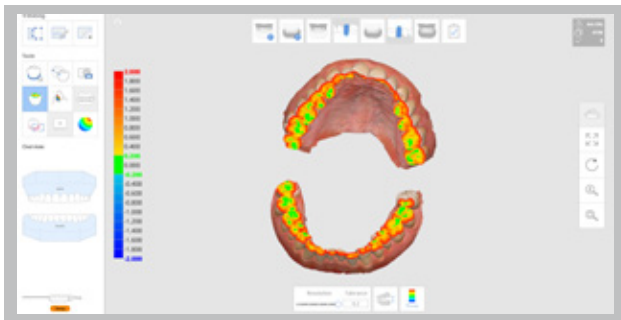
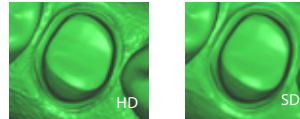
This function supports composite scanning operations which use both embossed oral scan data and engraved impression scan data. With just a simple scan, both data can be sorted and merged in real-time and used for modeling.





High Resolution Scan

You can select specific parts of the tooth to scan at high resolution. This function allows you to scan in HD only where it is required, enabling efficient management of scan time, data capacity etc. The selected area is displayed in a different color for ease of use.



Occlusion Analysis

The occlusion analysis function quickly analyzes the occlusal state of the maxilla and mandible, displaying the results in a color map with numerical values. The color map shows the degree of occlusion in different colors and displays the corresponding values when you move the cursor over each area. You can also check the distance between the prepped tooth and its antagonist.



Scan Replay

The scan replay function allows you to replay a previous scan process. By virtually showing the scan tip and scan area, you will be able to see how it was scanned, enabling you to identify and improve your scanning methods or habits.



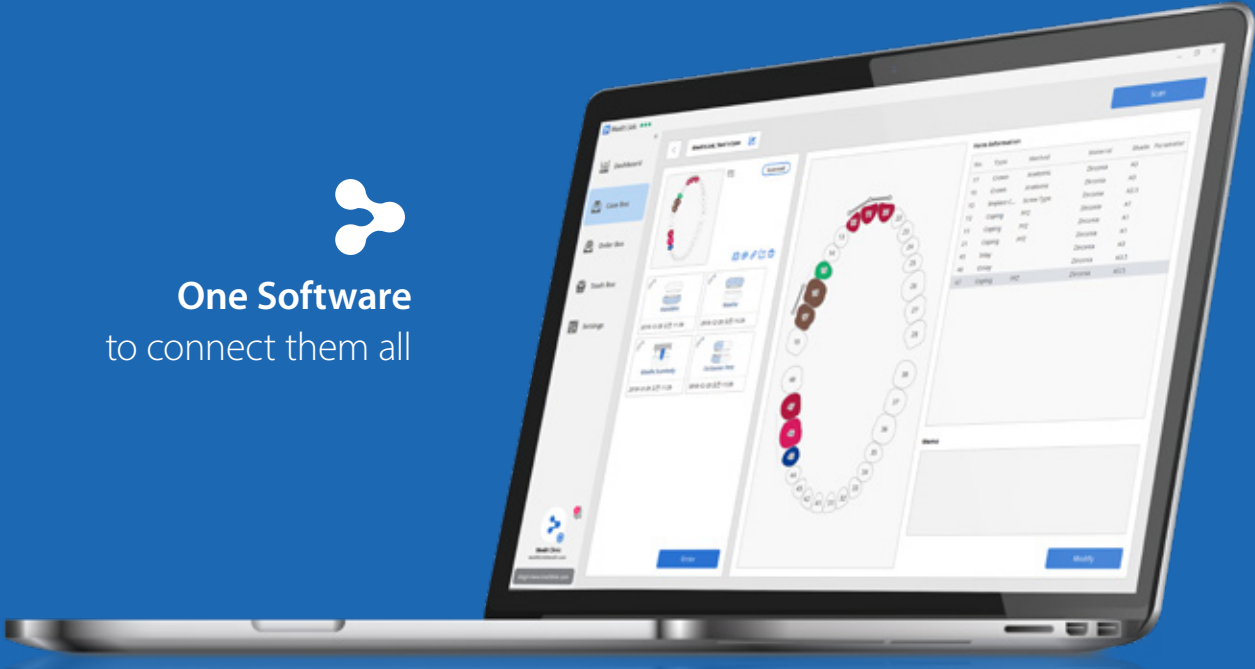
HD Camera

Along with 3D Scan function, this function allows you to use the scanner as intraoral camera to take HD pictures. You can share images with a lab and use them when consulting patients.

Medit's new workflow management and communication software, Medit Link, is developed to enhance your performance. Its integrated cloud storage and open data architecture ensure that your clinic's performance is optimized. However, everyday CAD processes with real-time workflow management and communication tools will also work.



One Software
to connect them all



Dashboard



Analytics



3D Viewer



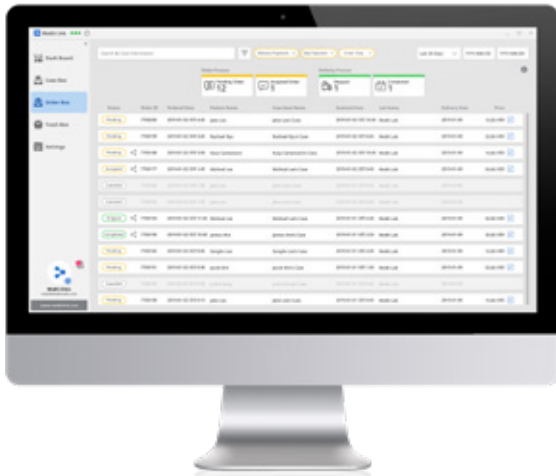
Cloud Storage



Communication



Payment

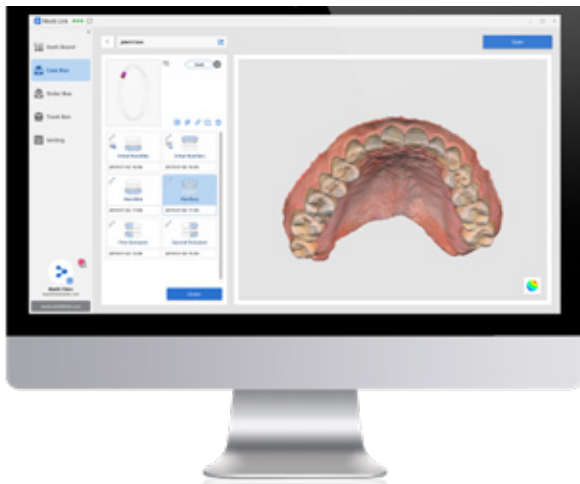
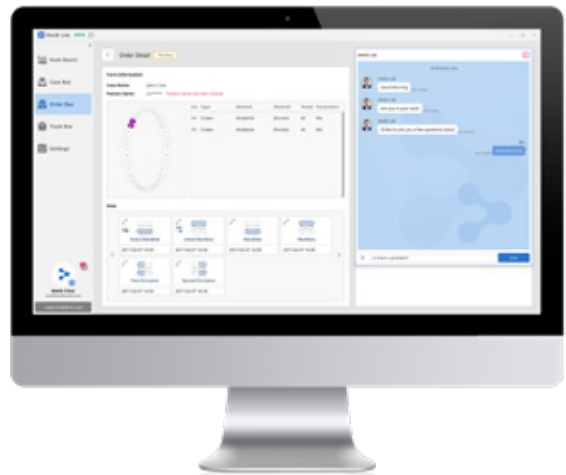


Cloud Storage

Medit Link is coupled with cloud storage for all digital scan files. Digital copies require less space than physical copies, and with our cloud system, you can easily archive your digital impressions and orders and manage cases wherever you are.

Easy Communication

By integrating direct communication options, you can ask your customers questions quickly to ensure the highest-quality outcomes. This will not only increase the quality of your end-product, but will also save you money and improve your customers' satisfaction in the long run.



3D Viewer

After completing the scanning process in the Medit i500 scan software, you can preview the final data via the 3D viewer in Medit Link.



Dashboard

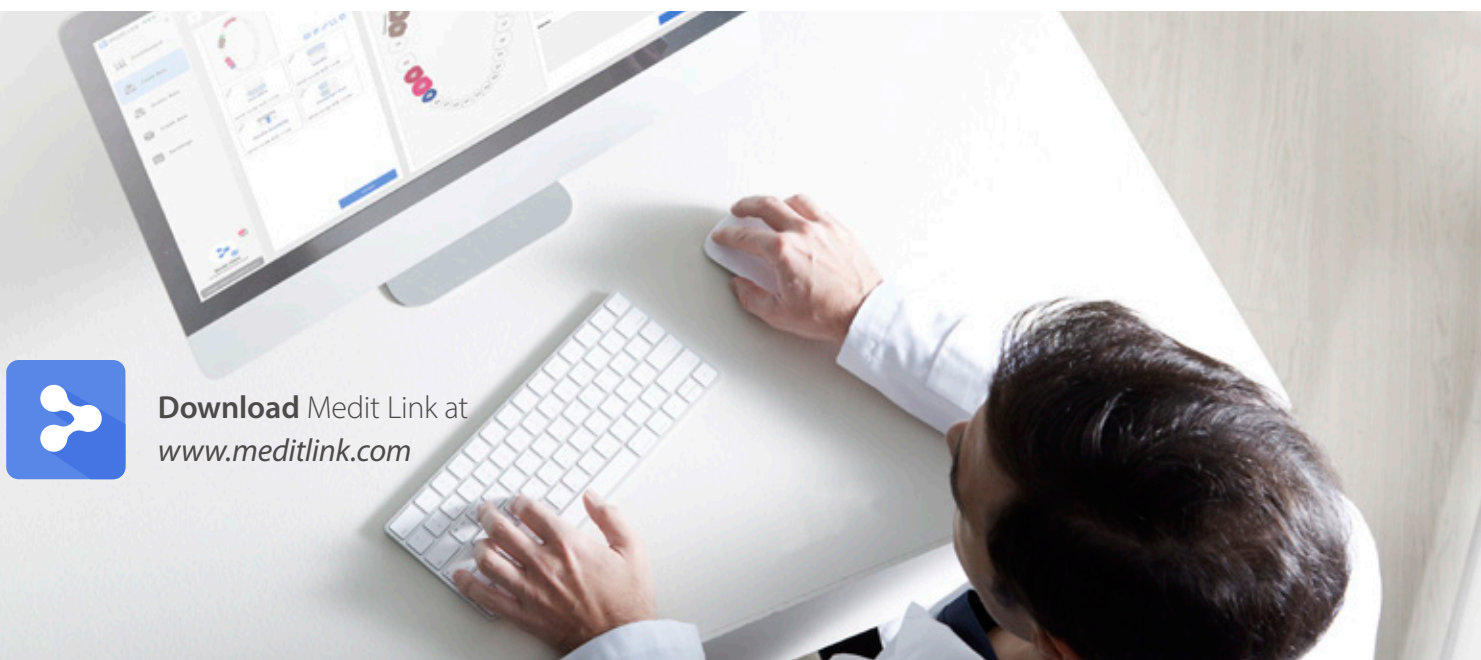
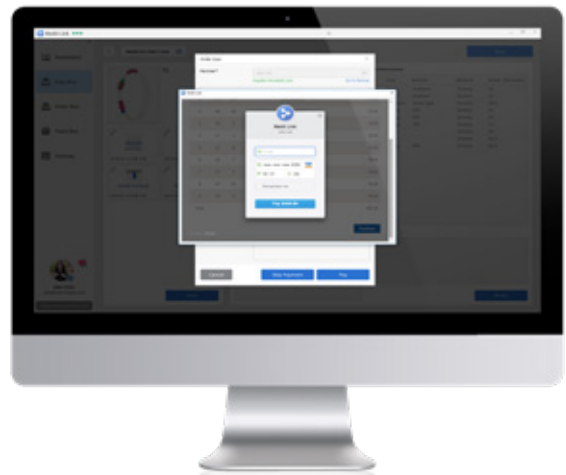
Users can view and manage scan data, as well as place orders on our new and improved Medit Link Dashboard. You can view information such as scan type, scan time, data storage space, order count, price etc. Our new Dashboard function also allows you to easily manage the performance of your business and communicate effectively with the lab.

Workflow Management

Medit Link allows tracking of workflows from order to delivery, and can even be linked to CAD/CAM software to improve work efficiency. Medit Link was created to help you manage your workflow in the easiest and most effective way possible, saving you valuable time.

Payment Management

Medit Link's billing management system automatically stores and manages your invoice to help you focus on the more important tasks. When you make payment for the first time, the payment information will be safely encrypted and stored in the server. This enables you to make future orders easily with just one click.



Download Medit Link at
www.meditlink.com

Medit & Zubler USA

Long Relationship

Zubler USA & Medit have been working together in the sales and support of products to laboratories and clinics throughout North America since 2015. With offices in Georgia and Texas, Zubler USA's team of support staff have trained with Medit to offer their clients the best possible service and training.



How we can help

Zubler USA's highly trained sales & support staff are available to assist you in the decision making process. Whether you are merely adding to your current digital flow or completely new to scanning. By utilizing online resources, demonstrations and tutorials we can show you the advantages the i500 offers your practice and your workflow. Get in touch with us to find out more.

Locations

Lawrenceville, GA	Dallas, TX	Online:
805 Marathon Pkwy. Suite 130 Lawrenceville, GA 30046 (770) 921-2131	16135 Preston Rd Suite 126 Dallas, TX 75248 (972) 600-9187	www.zublerusa.com sales@zublerusa.com

i500 Specifications

Category	
Tip size	19 x 15.2 mm (WxH)
Overall handpiece length	266 mm
Weight	280g
Imaging technology	3D-in-motion video technology
Color	3D full color streaming capture
Connectivity	USB 3.0
Scanning area	14 x 13 mm

About Medit

Since our foundation in 2000, Medit has worked to improve and revolutionize 3D imaging technology for both the industrial and dental fields. We strive to create the highest quality products for our customers while also working to bring down cost. Because of this, we have produced some of the most advanced and most affordable 3D scanners on the market.

Medit has achieved double-digit annual growth over several years through unparalleled technology and creative product development with the aim to maximize client convenience.

Developing our own patented state-of-the-art technology, Medit's mission is to provide the opportunity of success and growth to both our clients and employees.

