A large, clear water droplet is shown on a green leaf, with a bright light reflecting off its surface. The background is a soft, out-of-focus green. At the top center, the letters 'BDT' are displayed in a stylized, bold font with a white outline and a slight shadow.

BDT

THE CLEAN SOLUTION

Catalog | www.bdt-dental.de

WHEN QUALITY HAS TRADITION AND OUTSTANDING SERVICE IS, WHAT MAKES US SUCCESSFUL

How do you go from a small company in Offenburg to a globally successful manufacturer?

Ditmar Stemmer, Anton Prinzbach und Klaus Bruder founded BDT GmbH on the 1st January 1983, carrying on the dental technology division as a separate business when Bregler KG ended equipment manufacturing in 1982. Ditmar Stemmer continues as a Managing Director to this day following the retirement of the other founders.

The mission was clear: Improve work in dental laboratories by simplifying and optimizing processes and end products. In order to achieve this, we developed our own tool molds and had the necessary components manufactured by renowned, regional companies, which were then assembled in our facilities in Offenburg. This way, we could ensure the highest quality and efficiency for the production of larger quantities in a shorter period of time – in those days as well as today.

The first in-house product developments included the polymerization bath, the plaster separator with the 4-chamber clarification system and the air hose return device. The interest was great and the success confirmed our mission. Our products were in increasing demand, so that from now on we are regularly expanding the range of dental products. We have also been ISO-9001 certified since 2019.

Today, with Jessica Cooper, Ditmar and Daniel Stemmer as managing directors, we are a family business in the second generation, we sell our sophisticated dental products worldwide and are an international, successful manufacturer with the highest quality “Made in Germany”.

As a family business we stand for informative, fast and flexible interaction in all areas. With BDT at your side, you benefit from 40 years of experience and top quality.



Ditmar Stemmer

Ditmar Stemmer
Managing Director

Jessica Cooper

Jessica Cooper
Managing Director

Daniel Stemmer

Daniel Stemmer
Managing Director

LABORATORY TECHNOLOGY

Air hose return device	26
Air hose return device	27
Air blower	28
Holder	29
Spiral hose	30
Compressed-air hose	31
Compressed-air accessories	32
Return device for handpiece cable/ holder	33
Gas fittings	34
Gas hose/ accessories	35

LABORATORY REQUIREMENTS

TR-Box	38
TR-Box mini	39
Disinfection bath	40
Breglit stainless steel care products	41

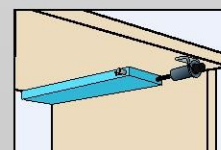
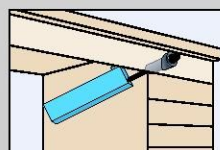
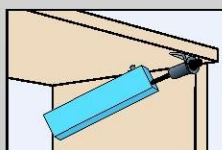
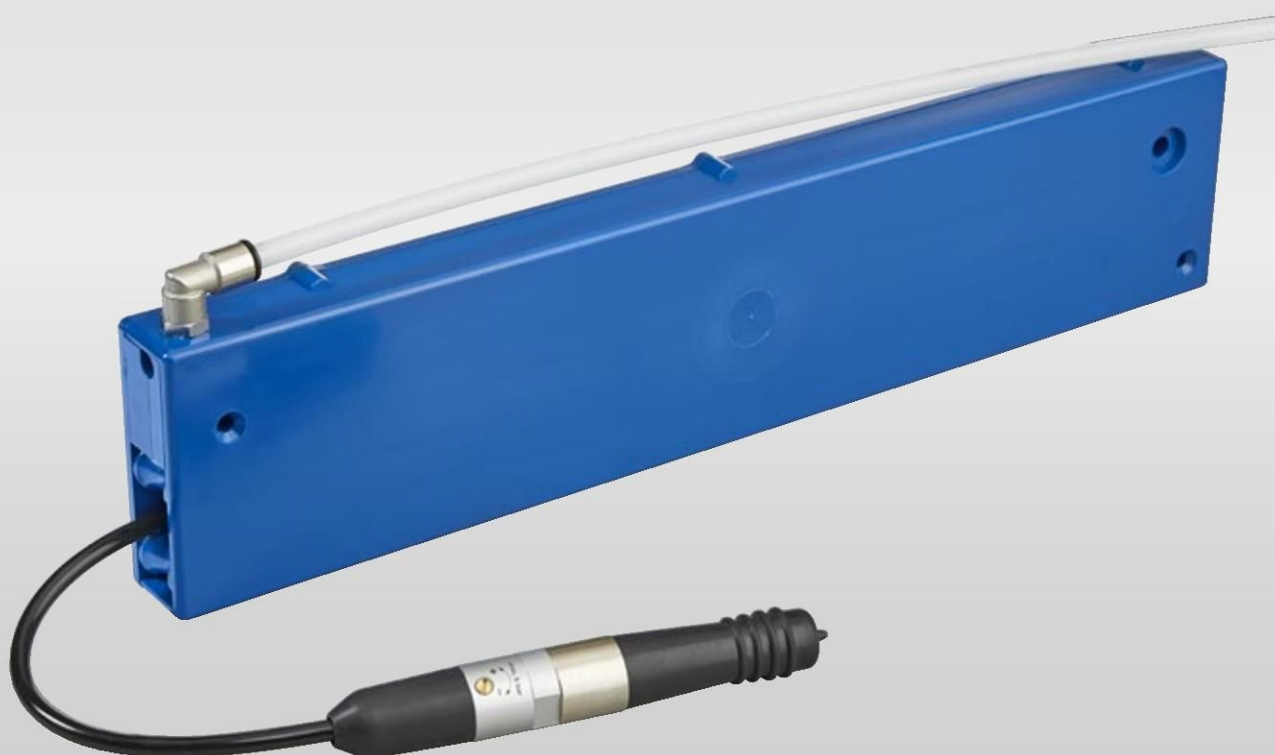


LABORATORY TECHNOLOGY

Particular attention is paid to a clean environment in the laboratory. With our laboratory technology, we support you in keeping your work environment clean. From air blowers to compressed air accessories, from return devices to gas fittings. In our product range you will find the suitable part for your laboratory facilities.

AIR HOSE RETURN DEVICE

- ✓ Including the air blower silent, 1 m connector hose & plug-in nipple
- ✓ Space-saving, gentle hose guiding
- ✓ Blowing without traction
- ✓ Compact unit
- ✓ Can be integrated into laboratory furniture

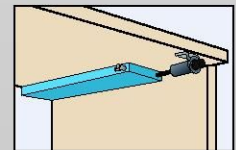
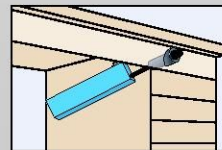
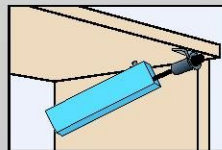
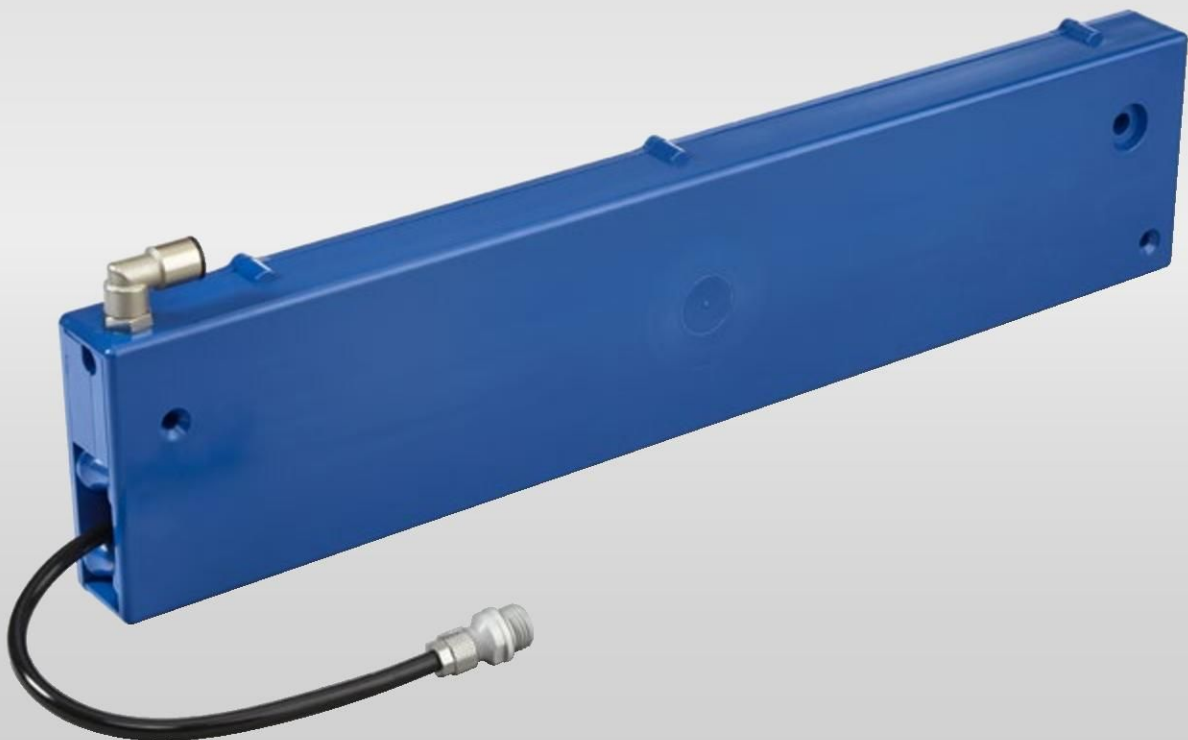


PRODUCT INFORMATION

Dimensions (l x w x h)	420 x 30 x 90 mm	470 x 30 x 90 mm
Hose length	550 mm	690 mm
Connection inlet	8/6 mm	8/6 mm
Connection outlet	6/3 mm	6/3 mm
Item no.	20148	20238

AIR HOSE RETURN DEVICE

- ✓ Space-saving, gentle hose guiding
- ✓ Blowing without traction
- ✓ Compact unit
- ✓ Integrable in laboratory furniture



PRODUCT INFORMATION

Dimensions (l x w x h)	420 x 30 x 90 mm	470 x 30 x 90 mm
Hose length	550 mm	690 mm
Connection inlet	8/6 mm	8/6 mm
Connection outlet	6/3 mm	6/3 mm
Item no.	20144	20237

AIR BLOWER

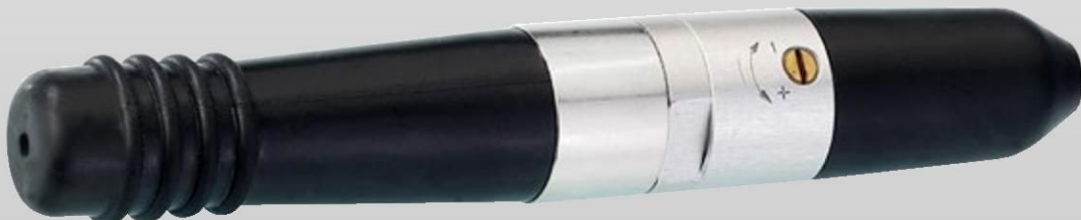
- ✓ Easy air volume control
- ✓ Rubber grommet to protect the tables
- ✓ 2 versions available
- ✓ Version silent 23 db quieter
- ✓ Up to 6 bar operating pressure

Item no. 50059 / 50075 / 50045

Version Silent



Item no. 50063 / 50132



PRODUCT INFORMATION

Version Silent	x	x	x	-	-
Hose connector	8/6 mm	6/4 & 6/3 mm	4/3 mm	8/6 mm	6/4 & 6/3 mm
Operating pressure	max. 6 bar	max. 6 bar	max. 6 bar	max. 6 bar	max. 6 bar
Item no.	50059	50075	50045	50063	50132

HOLDER

Suitable for air blower

Item no. 70034

Holder slanted flush mounted



Item no. 70102

Holder straight flush mounted



Item no. 70111

Holder slanted surface mounted



Item no. 70110

Holder straight surface mounted



SPIRAL HOSE

including air blower silent and plug-in nipple

- ✓ 2.5 m hose length
- ✓ Easy air volume regulation
- ✓ Air blower silent
- ✓ Up to 6 bar operating pressure



PRODUCT INFORMATION

Length	2,5 m
Operating pressure	Max. 6 bar
Hose diameter	6/4 mm
Plug-in nipple	NW 7.2

Item no. 20089

COMPRESSED-AIR HOSE

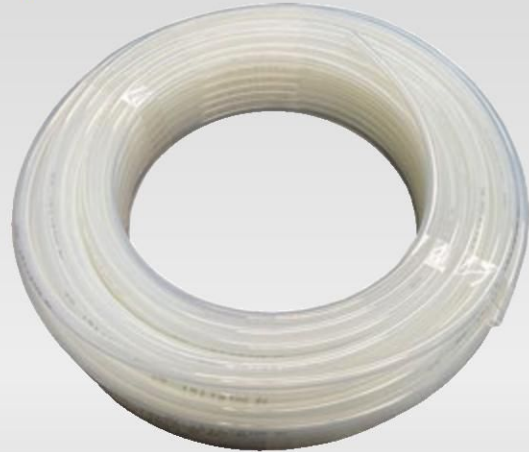
Item no. 50079 / 50073

Compressed-air hose PVC fibre-reinforced



Item no. 50101 / 50004 / 50033

Compressed-air hose PU



Item no. 50110

Compressed-air hose PUR



PRODUCT INFORMATION

Material	pvc fibre-reinforced	pvc fibre-reinforced	PU	PU	PU	PUR
Diameter	8/6 mm	6/4 mm	8/6 mm	6/4 mm	4,3/3 mm	6/3 mm
Item no.	50079	50073	50101	50004	50033	50110

COMPRESSED-AIR ACCESSORIES

for hoses

Item no. 50080 / 50009

Plug in nipple DN 7.2



Item no. 70069 / 50002

T-hose connector push-in

✓ To connect PU hose



Item no. 70070 / 70071

T-hose connector

✓ To connect PVC hose fiber-reinforced and PU hose



Item no. 50138 / 50102

Pressure regulator



PRODUCT INFORMATION

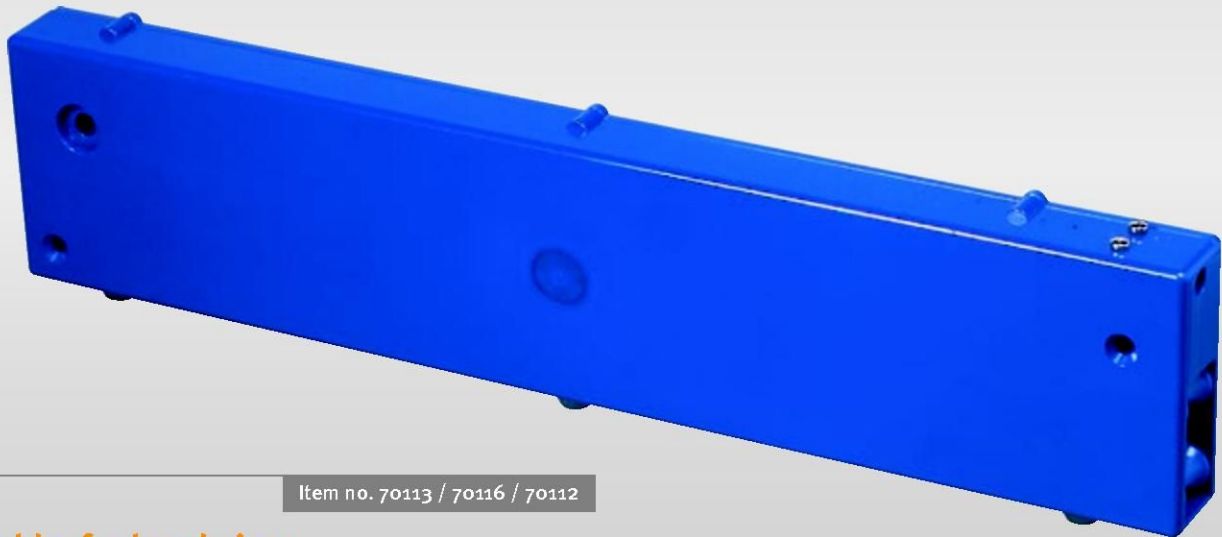
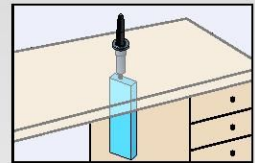
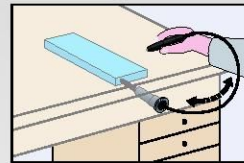
	Plug-in nipple DN 7.2		T-hose connector push-in		T-hose connector		Pressure regulator	
Suitable for hose diameter	8/6 mm	6/4 mm	8/6 mm	6/4 mm	8/6 mm	6/4 mm	8/6 mm	6/4 mm
Item no.	50080	50009	70069	50002	70070	70071	50138	50102

RETURN DEVICE FOR HAND-PIECE CABLE / HOLDER

Item no. 20178 / 20239

Return device for handpiece cable

- ✓ Existing handpiece can be integrated
- ✓ Space-saving, gentle hose guiding
- ✓ Work without traction
- ✓ Compact unit
- ✓ Integrable in laboratory furniture



Item no. 70113 / 70116 / 70112

Holder for hand piece

- ✓ Installation straight or slanted



PRODUCT INFORMATION

Return device for handpiece cable

Dimensions (l x w x h)	420 x 30 x 90 mm	470 x 30 x 90 mm
Extension length	550 mm	690 mm
Item no.	20178	20239

PRODUCT INFORMATION

Holder

Inner diameter	28 mm	30 mm	32 mm
Item no.	70113	70116	70112

GAS FITTINGS

for laboratory benches

- ✓ For combustible gas
- ✓ Up to 7 bar operating pressure
- ✓ Approved acc. to EN 13792

Item no. 30172

Gas angle tap with 1 gas hose



Item no. 30170

Gas fitting with 1 gas hose and 1 hose nipple



Item no. 30169

Gas fitting with 2 gas hoses



Item no. 30161

Gas angle tap with 1 hose nipple



Item no. 30171

Gas fitting with 2 hose nipples



PRODUCT INFORMATION

Gas fitting

Connection inlet	hose nipple	gas hose ½ inch	gas hose ½ inch
Connection outlet	hose nipple	hose nipple	gas hose ½ inch
Installation dimension	Ø 40 mm	Ø 40 mm	Ø 40 mm
Item no.	30171	30170	30169

PRODUCT INFORMATION

Gas angle tap

Connection inlet	hose nipple	gas hose ½ inch
Installation dimension	Ø 21 mm	Ø 21 mm
Item no.	30161	30172

GAS HOSE / ACCESSORIES

Item no. 30162 / 30060 / 30163

Safety gas hose



Item no. 30160

Gas hose



Item no. 30194

Hose connector cross



Item no. 30193

Hose connector T-piece



Item no. 30195

Hose connector straight



Item no. 30196

Hose clamps



Item no. 30188 / 30187 / 30186

Clamp ring connector

✓ For permanent connection of CU pipes and PE-X pipes



PRODUCT INFORMATION				
	Safety gas hose			Gas hose
Length	500 mm	1,000 mm	1,500 mm	yard goods
Diameter	18/10 mm	18/10 mm	18/10 mm	14/10 mm
Operating pressure	100 mbar	100 mbar	100 mbar	100 mbar
Item no.	30162	30060	30163	30160

PRODUCT INFORMATION				
Hose connector				
Type	cross	T-piece	straight	clamps
Diameter	10 mm	10 mm	10 mm	8–12 mm
Item no.	30194	30193	30195	30196
Clamp ring connector				
Diameter	10 mm	12 mm	15 mm	
Item no.	30188	30187	30186	



LABORATORY REQUIREMENTS

The laboratory is an important component of dental technology. This is where models are created, dentures are made or impression materials are mixed. We have the right products from boxes for models, disinfection tubs to professional stainless steel care.

TR-BOX

for articulator

- ✓ Transport and storage
- ✓ Aluminum design
- ✓ Lockable
- ✓ Shock-resistant
- ✓ Lightweight



PRODUCT INFORMATION

Dimensions (l x w x h) 270 x 230 x 210 mm

Inner dimensions 230 x 190 x 160 mm

Item no. 20235

TR-BOX MINI

for models with or without base

- ✓ Transport and storage
- ✓ Shock-resistant
- ✓ Stackable
- ✓ Lightweight
- ✓ Space for 6 models
- ✓ Interchangeable foam



PRODUCT INFORMATION

Colour	Light grey RAL 7035	Anthracite RAL 7016
Dimensions (l x w x h)	265 x 171 x 71 mm	265 x 171 x 71 mm
Weight	400 g	400 g
Item no.	20218/7035	20218/7016

DISINFECTION BATH

- ✓ Including sieve insert, draining equipment and lid
- ✓ Bath made from PP
- ✓ For cleaning instruments and impressions



PRODUCT INFORMATION

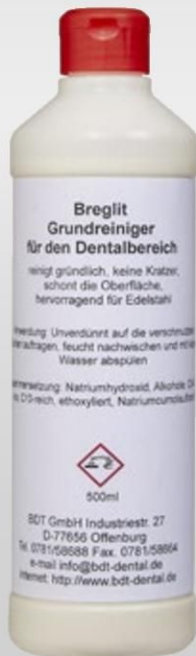
Colour of the lid	Transparent	White
Dimensions (l x w x h)	340 x 210 x 120 mm	340 x 210 x 120 mm
Filling volume	4 litre	4 litre
Item no.	10039	10040

BREGLIT CLEANING AGENT

Item no. 20013

Breglit stainless steel basic cleaner 500 ml

- ✓ Removes persistent dirt and stains
- ✓ Gentle cleaning
- ✓ Suitable for all stainless steel surfaces



Item no. 20076

Breglit limescale remover 500 ml

- ✓ Antibacterial
- ✓ Biodegradable



Item no. 20008

Breglit stainless steel care 1,000 ml in a spray bottle

Stainless steel care

- ✓ Fingerprints, marks, stains and tarnishes disappear
- ✓ Prevents rapid setting of plater and limescale
- ✓ Suitable for all stainless-steel surfaces



Item no. 20001

Breglit stainless steel care 400 ml in a can



BDT GmbH Gesellschaft für Gerätetechnik
Industriestraße 27 · D-77656 Offenburg · +49 (0)781 5 86 88 · info@bdt-dental.de
www.bdt-dental.de

