



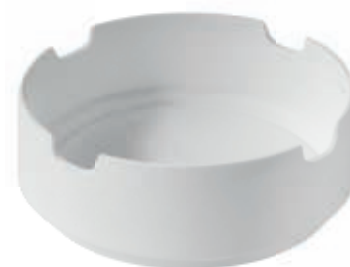
SINTERSCHALEN CLASSIC

SINTERING TRAYS CLASSIC



CLASSIC

- | | | |
|---|---------|---|
| 1 | 7100001 | ERS Sinterschale, 100/30mm
ERS Sintering tray, 100/30mm |
| 2 | 7100002 | ERS Sinterschale, 120/30mm
ERS Sintering tray, 120/30mm |
| 3 | 95020 | ERS Sinterschale, 100/35mm; belüftet
ERS Sintering tray, 100/35mm; ventilated |
| 4 | 96020 | ERS Sinterschale, 120/35mm; belüftet
ERS Sintering tray, 120/35mm; ventilated |
| 5 | 95025 | ERS Sinterschale Deckel, 100/4mm
ERS Sintering tray lid, 100/4mm |
| 6 | 96025 | ERS Sinterschale Deckel, 120/4mm
ERS Sintering tray lid, 120/4mm |
| 7 | 95026 | ERS Sinterscheibe, 100/12mm
ERS Sintering disc, 100/12mm |
| 8 | 96026 | ERS Sinterscheibe, 120/12mm
ERS Sintering disc, 120/12mm |





SINTERSCHALEN SPEED

SINTERING TRAYS SPEED



SPEED

1 7100005 **ERS Sinterschale SPEED, 100/30mm; geschlitzt**
ERS Sintering tray SPEED, 100/30mm; slotted



2 7100006 **ERS Sinterschale SPEED, 120/30mm; geschlitzt**
ERS Sintering tray SPEED, 120/30mm; slotted

3 95021 **ERS Sinterschale SPEED, 100/30mm (Set)**
ERS Sintering tray SPEED, 100/30mm (kit)



4 96021 **ERS Sinterschale SPEED, 120/30mm (Set)**
ERS Sintering tray SPEED, 120/30mm (kit)

5 95037 **ERS Sinterboden SPEED, 100/15mm**
ERS Sintering base plate SPEED, 100/15mm



6 96037 **ERS Sinterboden SPEED, 120/15mm**
ERS Sintering base plate SPEED, 120/15mm

7 7400061 **ERS Stapelscheibe, 120/15mm; für Sinterschale**
ERS Stacking disc, 120/15mm; for sintering tray

