

**A2 LED**

1000 HOUR LED LIGHT GUARANTEE

**New Arrival**





## CONTENTS

01



A2 Advantages

02



Compare

03



Specials





[sales@zublerusa.com](mailto:sales@zublerusa.com)



## ADVANTAGES

# A2

## LED Handpiece

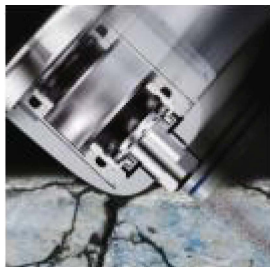
### Impervious LED Technology

Our SMD LED Technology allows the hand piece to be autoclaved more than 1200 times under 135°C and includes a 1000 Hour working life guarantee!





# ADVANTAGES



Strong 22 Watt  
High Torque Motor



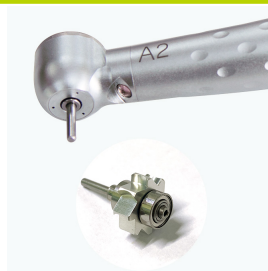
SMD LED  
Technology



Perfect Cooling  
Effect



350,000 RPM



Japanese Ceramic  
Covered Bearings

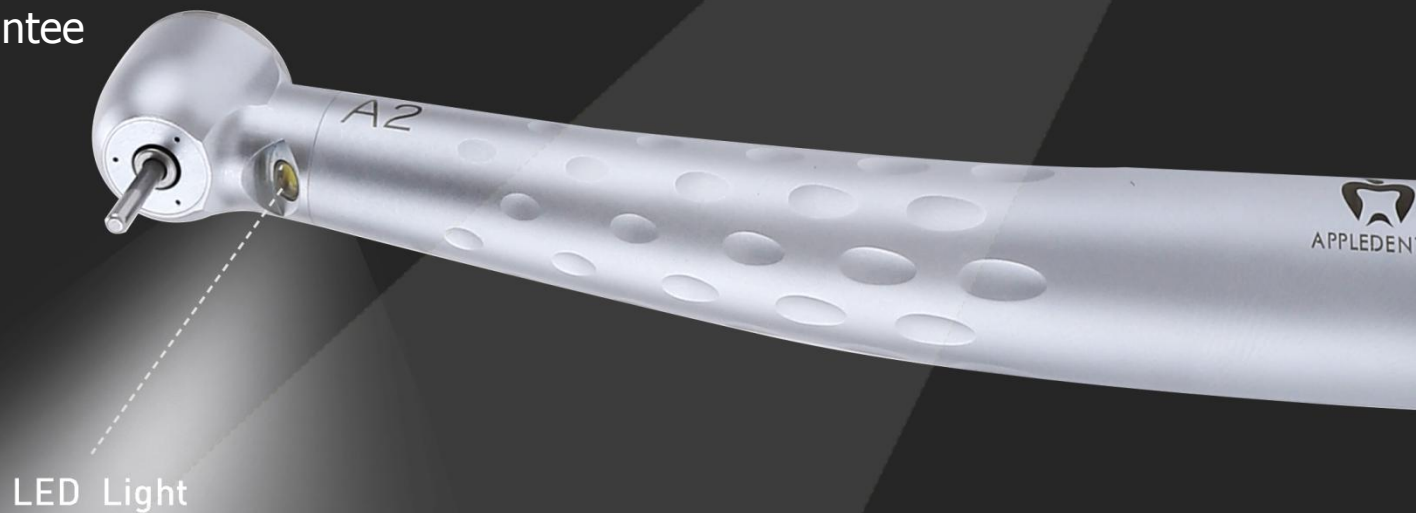


Quiet  
Less Than 65dB

SMD LED Technology

≥1200 times autoclaved

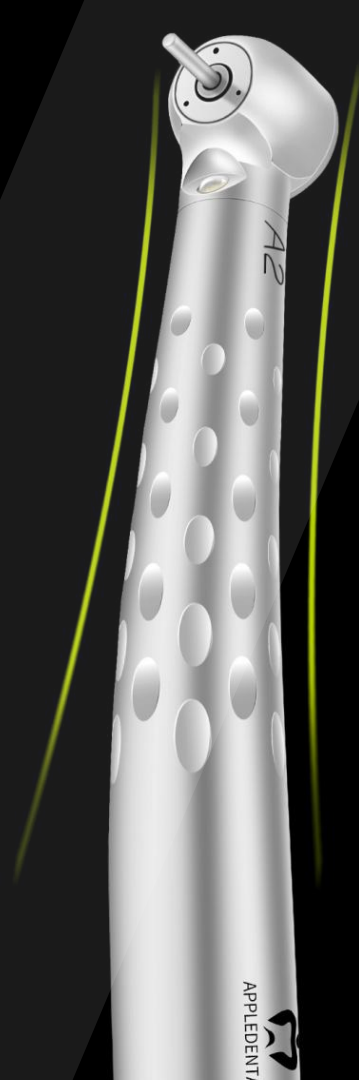
≥1000 hours LED guarantee



[sales@zublerusa.com](mailto:sales@zublerusa.com)

## **Integrated Solid Mold Head**

Provides smooth spray without clogging  
and no risk of breakage at the head and  
neck!





## ADVANTAGES

### Technical Data:

Model Version: A2

Model TUP

Working Pressure: 0.28(Mpa)-0.3(Mpa)

Rotational Speed: 300(krpm)-350(krpm)

Water flow: 60(ml/min)-90 (ml/min)

Noise:  $\leq 65$ dB

Light: White SMD LED

Brightness: 16,000Lux-20,000Lux

Color Temperature: 5,500(K)-6,000(K)

Head Diameter 12.5mm

Height: 13mm

Description: Torque Head, push button, triple water spray, exposed cartridge.





# A2

**LED handpiece**



Distributed by:

 **zubler** USA

130 Satellite Blvd NE  
Suite E  
Suwanee, GA 30024  
(770) 921-2131

[www.zublerusa.com](http://www.zublerusa.com)

[sales@zublerusa.com](mailto:sales@zublerusa.com)